



**ACE INDUSTRIES
(INDIA) PVT. LTD.**



**Customised Equipments For Your
Drying, Blending & Filtration Solutions**

ABOUT US

ACE INDUSTRIES (India) Pvt. Ltd. is an engineering company which specialises in the design, manufacture and supply of BASKET TYPE CENTRIFUGE for industries like Chemical, Pharma and API for their many applications. We have an impressive track record working in this field for over Four decades having supplied more than four thousand centrifuges (on turnkey basis all over the world) with exports to countries like Italy, Thailand, Nigeria, South Africa, Philippines, Malaysia, Bahrain, Iraq, Iran, Chile, Argentina & USA among others many countries.

Our manufacturing facilities are in Maharashtra and Gujarat. Mr. M. H. Makhani, The Promoter of ACE INDUSTRIES (India) Pvt. Ltd. is a ICT BCHEM ENGG. graduate who perfectly understands the buyers' requirement and can therefore manufacture equipments to suit their specific requirements. We have also successfully supplied and commissioned many chemical plants for conversion of sulphur to other useful chemicals.

Unit - I, Wada (Maharashtra)



Unit - II, Ankleshwar (Gujarat)



Unit - III, Vapi (Gujarat)



ACE PILOT-SCALE CENTRIFUGES

The brightness of centrifuge parameters can be easily determined with ACE pilot scale Centrifuge. We are proud to present this innovative solution for R & D , Pilot plants and kilo lab



LABORATORY CENTRIFUGE

RPM : 1400

G FORCE : 230

TABLE TOP CENTRIFUGE

BASKET SIZE : 8" (200MM) DIA X 6"
(150MM) DEPTH

CAPACITY : 1.5 LTR CAKE
(0.5 TO 1.5 LTR MAXIMUM BASKET
AVAILABLE)

MOTOR : 1HP

FILTRATION AREA : 0.094 SQ MT.

Available with Halar, Teflon,
PFA Coatings



FOUR POINT SUSPENSION CENTRIFUGE

RPM 2800

G FORCE : 870

SINGLE POINT CENTRIFUGE

CAPACITY : 7 LTR / 7 KG

BASKET SIZE : 12" (300mm) dia. x 8" (200mm) depth

MOUTH DIA. : 230 mm (10 in.)

MOTOR : 1 HP X 1440 RPM

BASKET SPEED: 900 rpm

G-FORCE : 135



Suitable for ETP/STP: Range - 1m³ to 10m³

UNIVERSAL PILOT CENTRIFUGE

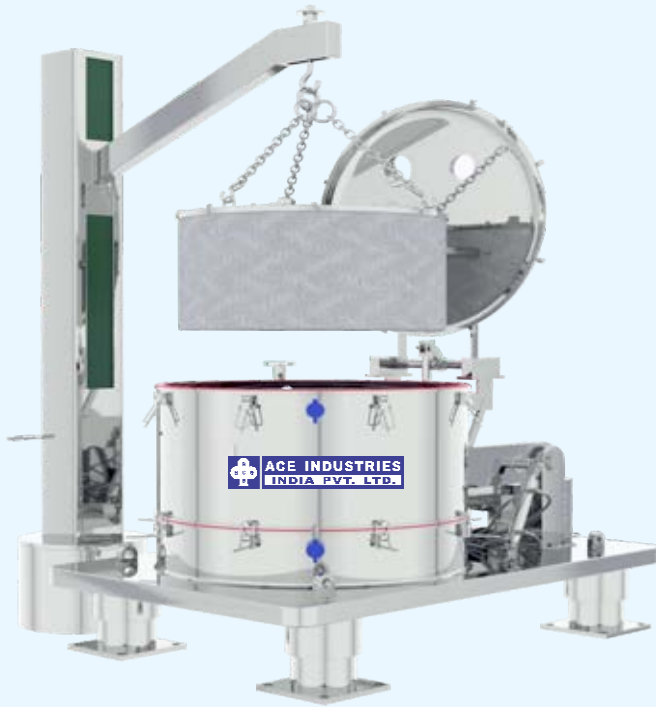
OUTSTANDING FEATURES:

1. Four-point machine.
2. cGMP model /CE marked Atex models available
3. Variable basket speed: Max 2000 rpm,
G-Force: 666 (max).
4. Capacity: 7 lit. / 7 KG
5. Trolley-mounted. Can be used on any storey.
6. Filter Area: 0.235 sq. mt.
8. Most suitable for biotechnology products.



LIFTING BAG CENTRIFUGE

The latest trend in solid / liquid separation is to go in for greater ease in cake handling. Filter cloth is available in the different micron size. The fabric with poly- propylene, woven/non woven polyester, nylon, cotton etc. with strengthening strips and hook up arrangement are easily available. The ACE lifting bag system supports such filter bags. Quick and easy fixing arrangement helps in the centrifuging. The time factor for the various operations is studied and this is passed on to the user at the time of installation and commissioning. The filter bag setting is precisely done so that the entire assembly is as fool-proof as the simple top discharge centrifuge. Hence 100% solid liquid separation without loss of a single solid particle in filtrate is achieved by the instant cake lifting type centrifuge.



SCHEME TO INSTALL COMMON LIFTER FOR TWO MACHINE



TECHNICAL DATA

MOTOR H.P.	BASKET SIZE	G FORCE	RPM	MOUTH I.D.(MM)	BASKET CAPACITY		FILTER AREA SQ.MTR	Platform Length L (MM)	Platform Width W(MM)	Platform with Outlet W2 (MM)	HEAD ROOM	
					VOL (LT)	MAX WT(KG) BD 1					LID OPEN (MM)	DOVE OPEN (MM)
3	24" X 13"	650	1400	425	45	45	0.61	1250	850	1250	1700	1400
5	30" X 13"	500	1100	550	75	75	0.71	1450	1150	1600	1850	1650
7.5	36" X 18"	512	1000	625	150	150	1.329	1650	1250	1800	2550	1950
15	48" X 20"	540	900	810	300	300	1.954	2100	1650	2250	3000	2500
15	48" X 24"	540	900	810	400	400	2.310	2100	1650	2250	3500	2800
20	60" X 24"	540	800	1010	600	600	2.911	2400	2000	2550	3800	3000
30	60" X 30"	540	800	1010	750	750	3.55	2500	2000	2550	4000	3200

Note: Dimensions and specifications are subject to change without prior notice

SPECIAL FEATURES OF LIFTING BAG TYPE MACHINE

ADVANTAGES OF LIFTING BAG TYPE

- The time required for cake removal is negligible.
- Production is increased two-fold.
- Manual contact with cake is avoided.
- Cake can be easily elevated to upper storeys without the use of lifts or trolleys.
- Cake spillage on the floor is nil.
- More volumetric charge per machine available.
- Easy cleaning of the basket in and out.
- Full opening of the lid helps maintenance.



INSIDE VIEW OF LIFTING BASKET

ADVANTAGES OF 4-POINT MOUNTING

- The vibration transmission is nil
- The machine can be used on upper storey.
- Good and clean house-keeping possible.
- No cost of R.C.C. foundation
- Can be shifted easily.
- Trolley mounting machines possible.
- No rusting and greasing headaches
- Maintenance of suspension negligible.
- Saving in floor area of the machine
- **cGMP in the true sense.**



ADVANTAGES OF FULL BODY TOP OPENING

The central flange of the machine is very thick and wide. It is machined all over. The bottom flange is given a square groove to hold Teflon, PTFE, SILICON packing with required projection.

The top flange sits truly on the packing making the joint 100% leak proof. Sufficient LBD LOCK allows quick and easy opening and closing.

The body top is hinged to the base plate. The hydraulic cylinder opens and closes the top part of the body easily. The body top once opened, gives easy access to the entire basket in and out.

The entire body from the inside and even the access to the central drive assembly is also made available. The basket if required can be removed when body top opens fully. Maintenance of the shaft and bearing housing can be easily done in top body opening machines.

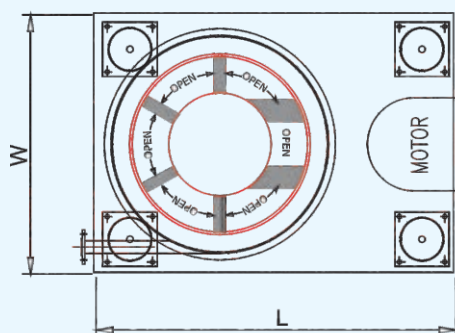


DOME OPEN LIFTING BAG TYPE MACHINE WITH LIFTER FOR EASY REMOVAL OF MATERIAL

MULTI POINT FULL BODY BOTTOM CAKE DISCHARGE



4-POINT SUSPENDED BOTTOM DISCHARGE CENTRIFUGE



TOP VIEW

TECHNICAL SPECIFICATIONS

MOTOR H.P.	BASKET SIZE	G FORCE	RPM	MOUTH	BASKET CAPACITY		FILTER AREA	FLOOR AREA		HEAD ROOM
				I.D.(MM)	VOL (LT)	WT(KG) BD 1		W (MM)	L(MM)	
5	24" X 13"	650	1400	425	45	45	0.623	1000	1650	1650
7.5	30" X 13"	500	1100	550	75	75	0.776	1250	2000	2000
10	36" X 18"	511	1000	625	150	150	1.329	1750	2500	2500
20	48" X 20"	540	900	850	300	300	1.899	2350	2850	2850
20	48" X 24"	540	900	850	350	350	2.31	2350	2850	2850
25	60" X 24"	540	800	1000	600	600	2.94	2750	3250	3250
30	60" X 30"	540	800	1010	750	750	3.55	2750	3250	3200

Note: Dimensions and specifications are subject to change without prior notice

The Pharma and Fine Chemicals Manufacturing sectors have to face the challenge of impurities below PPM (parts per million) levels. A clean centrifuge is a must.

The simplicity of the Bottom Discharge arrangement is also taken care of. The multi-opening full body bottom cake discharges without sweepers, the hydraulic scrapper, the cake sensor, the zero speed interlock, the safety switches, the anti vibration tripper, the DIN pressure test for air-tight operation, nitrogen purging with oxygen analyser, the GMP version, are all a part of the ACE BOTTOM DISCHARGE CENTRIFUGE. The dimensions of the machine and the headroom for basket sizes of 24" dia. to 60" dia. are given below:



4-POINT SUSPENDED BOTTOM DISCHARGE CENTRIFUGE WITH DOME OPENING



Gerb Dampner

THE PROCESS

a) Feeding:

The slurry has to be charged through the feed pipe. The cake should develop uniformly inside the basket. The basket speed is almost half of the full speed. Care is taken with feed valve to control the flow rate of feed to ensure complete filtrate discharge. The collapsible filter cloth holding rings are provided to prevent cake carry over with liquid.

b) Cake Sensor:

The cake sensor gives the indication of cake filling up to the basket rim. The feed must be stopped if hooter sound of cake sensor is heard. The Feed Solenoid valve can be closed with PLC and cake sensor.

c) Washing & Spinning:

We provide special up and down moving efficient wash nozzles.

The cake should be washed free from impurities at a little higher speed than the feed speed. When wash discharge is free from impurities, the basket speed is raised to the maximum. The drying of cake is maximum due to maximum basket speed.

d) Dynamic Braking:

It is achieved by pressing of the STOP button of the control panel. The basket comes to a stand still within 200 seconds.

e) Scrapping:

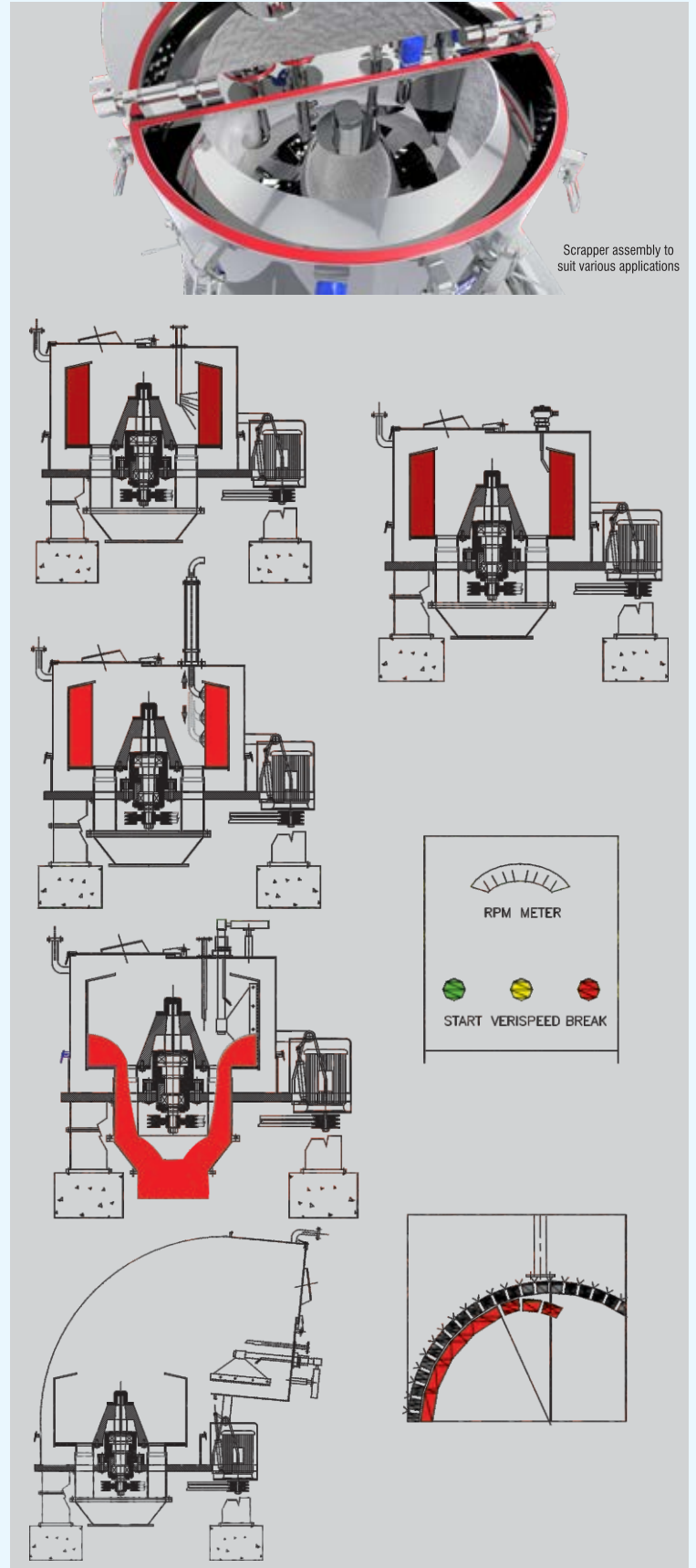
The basket is run at a minimum possible speed. The hydraulic power pack is switched on. The scrapper is rotated around the scrapper shaft. The cake is cut and discharged through full body discharge - opening provided below the body. Cake butterfly valve is bolted below the body to prevent liquid from entering cake holding tank due to malfunction. The scrapping takes about 30 minutes.

f) Heel Removal:

The gas pressure is applied on the jet nozzles provided outside the basket. The basket is run at a SLOW SPEED with scrapper in cut position. The jet pressure dislodges the last layer of cake.

g) Dome Opening:

The Scrapper is taken back to neutral position. The dynamic brake is applied to bring the basket to a stand still. The dome LBD locks are released. The dome is opened with HYDRAULIC Power pack lever. The cleaning of the body is easily done.



MANUAL TOP DISCHARGE CENTRIFUGE

Manual Top Discharge Machines are available with full body open lid, full lip mouth open lid and 3/4 lip mouth open lid. ACE offers dome opening machines in its entire range of basket sizes. The washing & feeding is designed to meet Product requirements. The Manual Top Discharge Machines are available from as small as 8" dia to as large as 60" dia.

We have made as large as 60" dia Basket Size of our STD Model 180-4 centrifuge machine giving cake load of 1000 lit/ 1200 kg per batch.

Lid available in three options:

- 1) Full mouth open lid
- 2) D-type lid
- 3) Full body open lid

Salient Features:

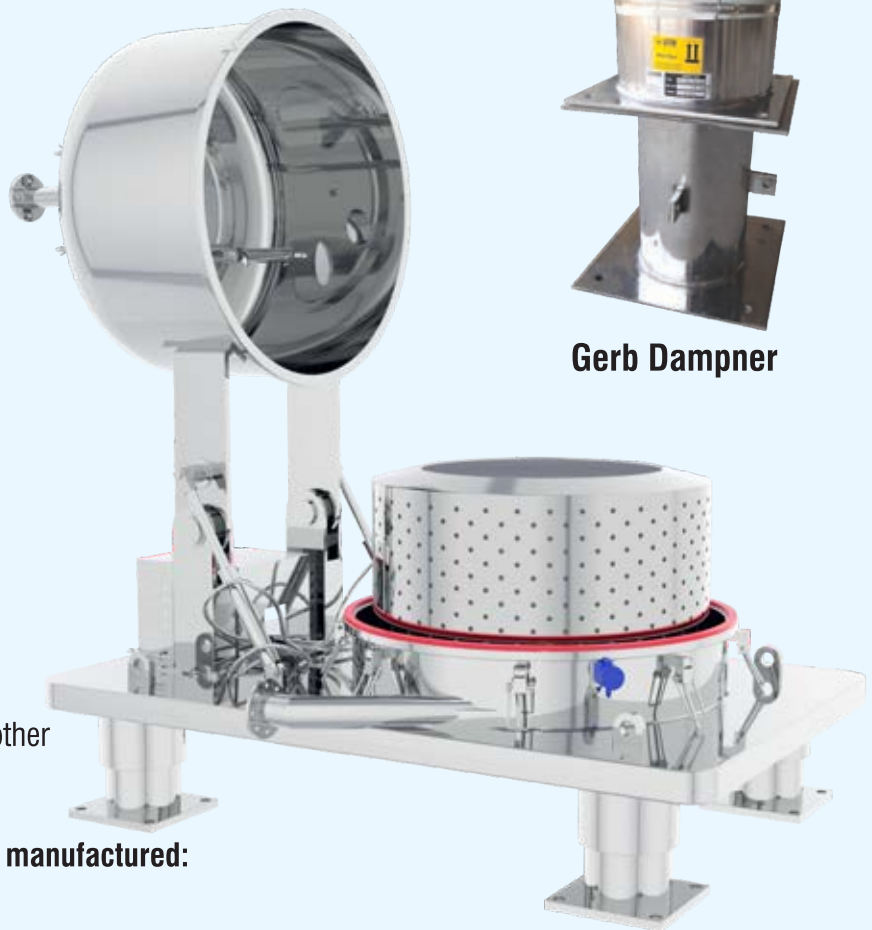
- No grouting required
- Machine can be easily taken from one place to another
- Recommended for clean housekeeping

Technical Specifications of models currently being manufactured:

Safety Features:

- Nitrogen blanketing System
- Vibration Tripper
- Zero speed Interlock
- FLP Lid and Dome Sensor

cGMP MTD Centrifuge Machine with Dome Open



Gerb Dampner

SR NO.	MODEL No. 'ACE'		30-3	45-5	50-5	60-5	75-5	90-5	120-5	150-4
1	Basket diameter	mm	300	450	500	600	750	900	1200	1500
2	Basket mouth diameter	mm	250	325	400	425	550	600	800	1000
3	Height of basket shell	mm	250	250	300	325	325	480	480	600
4	Rated charge of basket	kg	7	18	25	45	75	187	330	660
5	Max. cake Capacity of basket	ltr	6	20	25	44	66	170	300	600
6	Filter Area of Basket	Sq.m	0.24	0.35	0.417	0.60	0.76	1.35	1.8	2.82
7	Basket Speed	RPM	1400	1400	1400	1220	1100	1000	900	800
8	Acceleration a basket periphery	'G' units	330	500	540	499	507	503	540	540
9	Power of Motor	HP KW	1 0.75	2 1.50	2 1.50	3 2.20	5 3.70	7.5 5.5	15 11.25	20 15.00
10	Machine area (approx)	mtr	0.6x0.8	0.9x1	1.2X1.0	1.2x1.5	1.5x1.7	1.7x1.9	2.2x2.5	2.5x2.8
11	Machine weight (Approx.)	kg	225	650	800	950	1150	1800	3000	4000

AUTOMATION OF CENTRIFUGES



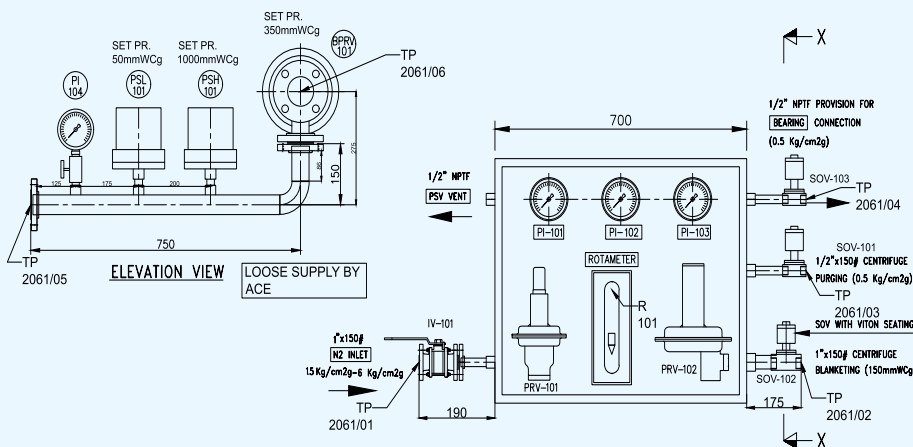
**FREE REPLACEMENT
GUARANTEE OF VFD
WITHIN 12 MONTHS
FROM DATE OF
COMMISSIONING**

***CE and ATEX certified machines available on request.
ACE Has Supplied Several Such Systems With Great Success.**

ADVANTAGES OF USING V.F.D.

The use of V.F.D. (VARIABLE FREQUENCY DRIVE) in centrifuges is a great advancement. The V.F.D of a standard make is used preferably one that has an in-built BRAKING CHOPPER and RESISTOR. The centrifuge runs with high starting and braking torque. Although ACE clutch pulleys and hand brakes are sturdy enough to do the job, the V.F.D. does it electronically. The wear and tear of brake liners and clutch liners is negligible. It is worthwhile to invest in a V.F.D. The variable speed is welcome to save power. The V.F.D. gives smooth centrifuging operation. Also, the work of feeding and washing can be done at lower basket speeds and the centrifuge drying can be done at higher speeds, if the basket charge is properly balanced.

CENTRIFUGE BLANKETING SYSTEM



In pharmaceutical industry three types of Interstation systems are widely used based on Application / criticality / suitability & commercial aspect.

- Manual Centrifuge Blanketing System
- Semi-Automated / Timer Based System
- Fully Automated / On-Line Oxygen monitoring system

There is an extensive range of Centrifuge types and sizes. The most common type is the top or bottom discharge filtration batch centrifuge. The types of industries using Industrial Centrifuges are similarly diverse. These include the chemical, pharmaceutical, petrochemical, and food industries. Ace make nitrogen blanketing system provid added safety ensuring inert operation of centrifuges. It has connectivity to the main panel for low and high level of nitrogen in the machine

Skid Mounted Ready To use Package : Centrifuge Blanketing system are skid mounted ready to use packages. Our customer has to connect Nitrogen at inlet & outlet of the system is to be connecting to centrifuges.

FLUID BED DRYER

A Fluid Bed Dryer is designed for fast and uniform drying of powders, crystals and medium sized pellets. The Fluid Bed Dryer finds application in Pharmaceuticals, Bulk Drugs, Dyes & Chemicals, Phyto-Chemicals, Catalysts, Food Products & Starch derivatives, Pesticides etc.

Fresh air is drawn in by means of a blower. The suction of fresh air takes place from the AHU. The air is then heated to produce hot air by use of electric heaters/steam Radiator/Thermic fluid . If the product contains a solvent or inflammable substances, the dryer must be operated using steam and provided with a flame-proof motor.

The heated air passes through the product container which has diffuser plates and a sieve. Due to the stream of air, the wet product gets fluidised. The material gets surrounded by the hot air and gets dried due to heat transfer. Moist air passes through a filter bag and an exhaust duct.

The Fluid Bed Dryer is not suitable for drying of liquids or paste.

ADVANTAGES:

In a Fluid Bed Dryer, the temperature is distributed uniformly throughout the product and the heat rate is very high. High production rates are achieved because of reduced drying time.

As the product is in close contact with the drying air at a low temperature and for a short duration, the physical and chemical properties of the product are not affected generally and hence the dryer can be effectively used in the case of heat-sensitive products. As the product is continuously moving during the drying process, there is minimal lump formation or case hardening.



TECHNICAL SPECIFICATIONS:

ACE-18

Model	ACE- 5	ACE-30	ACE-60	ACE-120	ACE-150	ACE-200	ACE-250	ACE-300	ACE-500
Container Vol. (Ltrs.)	12	90	200	425	525	650	800	900	1700
Batch Capacity in Kg	3-5	30-40	60-75	120-130	150-160	200-225	250-280	300-325	500-550
Drying Temp. in C	50-80	50-80	50-80	50-80	50-80	50-80	50-80	50-80	50-80
Motor H.P.	2	7.5	10	20	20	25	30	30	60
Electrical Heating Load (If Required)	6	18	36	54	Electrical heating not recommended				
Approx. Steam Consumption kg/hr	-	143	195	259	300	337	422	550	757

Note: Dimensions and specifications are subject to change without prior notice

AIR TRAY DRYER



Air Tray Dryer is used for the best drying results in conventional process. It consists of a double-walled cabinet with one or two doors. The gap between two walls is filled with light resin-bounded fibreglass wool insulation material to avoid heat loss. The doors are provided with gaskets to avoid air leakages from the front side of the door. Stainless steel trays are placed inside the chamber, cGMP model dryers are designed to dry specific products.

Std chamber size : to hold 6, 12, 24, 48, 96 and 192 trays. Lab model for 5 – 10 kgs available

Standard, CGMP models available with SS304/SS 316 internals and externals.

Construction: heavy duty with single body design making it C GMP complaint easy for cleaning and up keeping of the equipment.

TECHNICAL SPECIFICATIONS:

Capacity	12	24	48	96	192
Tray size	800mm X 400mm X 32mm in SS 304/316 quality				
Motor H.P.	0.5	0.5	1	1HP x 2 Nos.	1HP x 2 Nos.
No. of Trolleys	Nil	Nil / 1	1	2	4
Heating load KW					
100°C	3	6	9	18	36
200°C	6	9	15	24	42
300°C	9	12	21	30	48

Note: Dimensions and specifications are subject to change without prior notice

RIBBON BLENDER

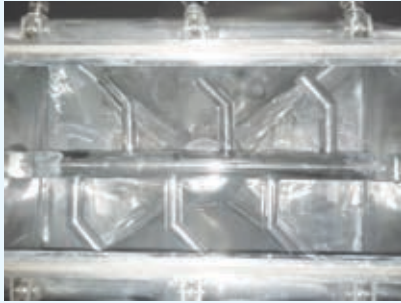
STANDARD FEATURES

- Available in working capacity of 5 liters -15,000 liters
- Available in all grades of stainless steel, carbon steel and special alloy steels.
- Ribbon agitator for center discharge.
- Designed for atmospheric operation.
- Top cover with nozzies for material charging.
- Centrally located Flush bottom discharge valve.
- Jacket available for heating & cooling purpose.
- Stuffing boxes with easily disassembled housings.
- PTFE gland packing provided.
- Stainless steel surfaces are polished to desired standards.
- All exterior non-stainless surfaces are painted with enamel paint.
- Warm reduction gearbox, helical reduction gearbox.
- Single Speed Drive.
- Blender is mounted on supports providing adequate discharge clearance.



Ribbon blender

OCTAGONAL BLENDER



Inside View of Blender showing Baffles arrangement

SPECIAL FEATURES OF OCTAGONAL BLENDER:

- The Octagonal Blender is suitable for dry mixing of products in granule form.
- Easy for loading and unloading of material.
- Easy for cleaning.
- All contact parts of the Octagonal Blender are made out of SS 304 / SS 316 or SS 316 L quality material, as per customer's requirements.
- The octagonal shape and slow speed of rotating gives sufficient continuous movement to the granules, resulting in good quality.
- Simple design of Octagonal Blender requires minimum maintenance.
- General structure and safety guards made out of mild steel and coloured in Standard Model and made out of SS 304 and polished to a matt OR mirror finish in GMP Model.
- Actuated butterfly valve for easy opening of outlet discharge.
- Limit switch for safety purpose.
- Bigger size batch at low power consumption.

TECHNICAL SPECIFICATIONS:

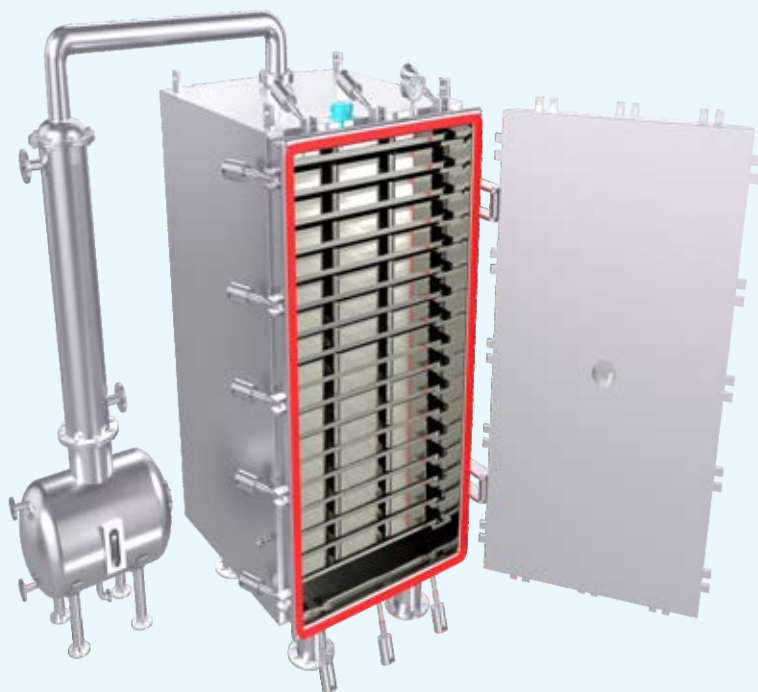
MODEL	VOLUME IN LITRES	DISCHARGE BUTTERFLY VALVE	GEAR BOX	MOTOR	DIMENSION L X W X H
ACE 35	50	4"	17	0.5 HP	995 X 790 X 1077
ACE 70	100	4"	22	1 HP	1150 X 1160 X 1575
ACE 140	200	6"	22	1 HP	1560 X 984 X 1517
ACE 210	300	6"	3"	1.5 HP	1625 X 119 X 1641
ACE 350	500	6"	3"	1.5 HP	1850 X 1304 X 1842
ACE 525	750	8"	3 1/2"	2 HP	2000 X 1453 X 1986
ACE 700	1000	8"	4"	3 HP	2230 X 1520 X 2060
ACE 875	1250	10"	4"	3 HP	2380 X 1595 X 2122
ACE-1050	1500	10"	5"	5 HP	2480 X 1643 X 2172
ACE 1400	2000	10"	5"	5 HP	2700 X 1760 X 2290
ACE 1750	2500	12"	6"	7.5 HP	2800 X 2010 X 2537
ACE 2100	3000	12"	7"	10 HP	3000 X 2142 X 2671
ACE 2450	3500	12"	7"	10 HP	3100 X 2289 X 2860
ACE 2800	4000	12"	8"	12.5 HP	3150X 2289X 2819
ACE 3500	5000	12"	8"	15 HP	2450 X 2436 X 2968
ACE 7000	10000	16"	12"	30 HP	4430 X 2912 X 3438

Note: Dimensions and specifications are subject to change without prior notice

VACUUM TRAY DRYER

A Vacuum Tray Dryer works under vacuum conditions on the conduction principle. Inside the dryer are several shelves having trays on which the products are placed. The top most shelf is a dummy shelf placed there to ensure proper heating and to prevent the dried powder from escaping into the solvent extraction system.

The shelves are constructed hollow with baffles cum stiffeners placed in between shelves. Every shelf



VTD's are used where the moisture / solvent or wet powder has a low flash point

has an inlet and outlet nozzle and is connected to an inlet and outlet header through these nozzles. A hot medium reaches the shelf through the inlet header and flows through the shelves in a uniformly zig-zag pattern ensuring faster heat transfer to the surface. This in turn heats up the trays on the shelves. The hot medium flows out from the shelf through the outlet header.

The inlet and outlet headers are designed in such a way that the flow of the heating medium is equally distributed into each of the shelves. The dryer chamber is constructed from heavy-duty plates to prevent the plates from buckling during the vacuum operation. Additional limpet coils are provided in order to further stiffen the body and to pass on the hot medium. The chamber is provided with a heavy door and adequate locking arrangement.

The dryer chamber is connected to a shell & tube by means of a vapour column to a Heat Exchanger. This in turn is connected to a condensate receiver. Vacuum is applied to the condensate receiver. Vapour evolved during the drying process collects in the receiver after it is cooled in the heat exchanger.

The vapour to be cooled is passed through the tube side of the Heat Exchanger, while cooling water is passed through the shell side. A cooling coil in the condensate receiver cools any vapours entering the receiver before it goes into the vacuum pump. The condensate receiver is connected to a vacuum trap to make sure that any uncooled vapours from the receiver get trapped thus minimising the vapour content entering the vacuum pump.

TECHNICAL SPECIFICATIONS:

Capacity	6	12	24	48	60	96
Tray size	800mm X 400mm X 40mm in SS 304/316					
No. of shelves	6+1/3+1	6+1	8+1	16+1	15+1	16+1
Tray / shelves	1/2	2	3	3	4	6
Chamber thickness	6	6	6	6	6	8
Condenser (Sq.m)	0.5	1	2	4	4	6
Receiver (Ltrs.)	25	50	50	100	100	150

Note: Dimensions and specifications are subject to change without prior notice

ROTOCONE VACUUM DRYER



Roto Cone Vacuum Dryer is suitable for drying of materials which cannot resist high temperature, materials which are easily oxidized, volatile materials which should be retrieved, materials that are strong irritants and poisonous in nature. The Roto Cone Dryer with improved technology integrates during operation under vacuum. The Roto Cone Dryer facilitates enhanced drying efficiency, low temperature operation and economy of process by total solvent recovery. It helps cGMP base working by achieving optimum dust control, while offering advantages of efficient charging and discharging of materials. The drying unit equipped with lump breakers initially breaks large lumps and subsequently powders them (in a single cone). The rotary action of the dryer together with mechanical action of the breakers cuts down drying time and gives a lump-free product.

ADVANTAGES:

Reduces drying time • Eliminates need for re-drying of lumps • Handling and exposure of final product is avoided • Gives uniform size dry product • System can process crystalline or amorphous powders which are prone to lumps • Easy to clean internal surface ensures purity of product • Optimum and continuous vacuum maintenance during process • Uniform material shuffling over the heated contact surface of the cone.

SALIENT FEATURES/ MOC (in GMP Model):

- Inner shell/Cone and contact parts in SS 316.
- Steam/HW water Jacket in SS 304.
- Insulation with jacket in SS 304.
- Cyclone separator in SS 316.
- Condenser (shell & tube) and Receiver in SS304
- Butterfly valve (SS316) at discharge port with dummy and hand wheel.
- Stand and Structure in SS 304/MS with SS304 cladding. Drive unit enclosed with SS304 Covers
- Dry Mechanical Seal for vacuum side.
- Dry Mechanical Seal for Waterside.
- FLP Motor & FLP Control panel enclosed in SS304 panel
- Digital Temperature Indicators (FLP) at Hot Water inlet and outlet.
- Digital Temperature Indicator (FLP) and Dial Vacuum Gauge in vapor line.
- Digital Temperature Controller (FLP) with Pneumatic Valve at Hot water inlet.
- Provision for Nitrogen purging/Vacuum release with interlocking to isolation valve
- Temperature and Vacuum Gauges (Dial Type) on Cone.

- Safety Guard/railing telescopic type with limit switch (FLP) with interlocking.
- Drain plug and safety valve on HW/Steam Jacket.
- Pulse jet type dust filter is provided in side the cone.
- Positioning wheel /inching button for cone
- **DRIVE:** Gear Box & Motor Direct Coupled and Gear Box to Cone Drive shaft Bull Gear-Pinion Gear Drive.
- Extended shaft (drive side) so that drive unit can be kept in service zone (if required).
- Vacuum loading system of wet material into the Cone.
- **FINISH :** Internal 320 grit mirror polish and outer 180 grit mat finish.

OPTIONALS:

- VFD for Drive Motor with RPM indicator.
- Condenser and Receiver in SS316 instead of SS304.
- Lump breakers with FLP motor, Mechanical seals and electrical slipring joint.
- Auto Bin loading mechanism with timer control and Bins.
- Vacuum pump with FLP motor.
- Hot water system (steam heated) with tank and circulation pump.

ROTOCONE VACUUM DRYER

TECHNICAL SPECIFICATIONS:

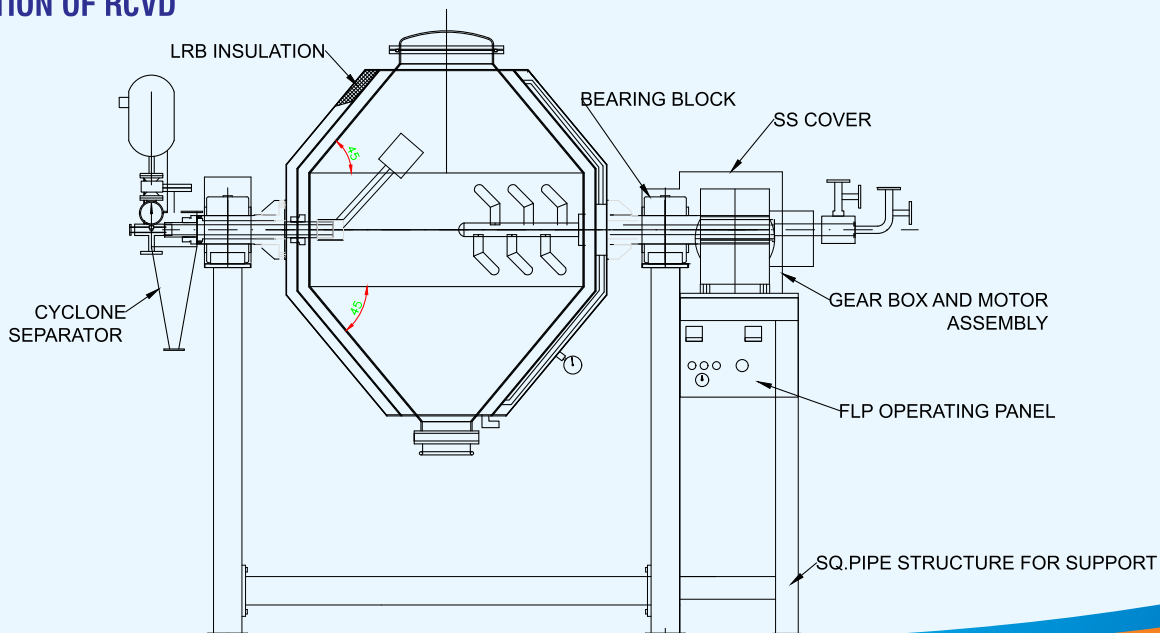
MODEL	ACE 15	ACE 100	ACE 200	ACE 300	ACE 500	ACE 750	ACE 1000	ACE 1500	ACE 2000	ACE 3000	ACE 4000
Total Volume in Ltrs	15	100	200	300	500	750	1000	1500	2000	3000	4000
Working Volume in Ltrs	9	60	120	180	300	450	600	900	1200	1900	2400
Capacity in Kg (max)	5	30	75	100	175	250	350	500	700	1050	1320
RPM	6	6	6	6	6	6	6	6	6	8	8
Heat transfer area in m ²	0.5	3.5	4.2	5	6	7	8	9.5	11	13.3	16.8
Cyclone Separator in Ltrs	1	5	7	10	15	20	25	30	40	100	100
Condenser in m ²	0.1	0.5	0.75	1	1.5	2	2.5	3	4	8	8
Receiver in Ltrs	3	20	40	50	75	100	150	200	250	300	400
Charging Ht in mm	700	1350	1500	1650	1800	2000	2300	2500	2650	3685	2910
Discharging Ht in mm	300	600	650	650	700	650	750	750	750	850	850
Charging Size in mm	• 150	• 250	• 300	• 300	• 350	• 400	• 400	• 450	• 500	• 500	550
Discharging Size in mm	• 75	• 125	• 150	• 150	• 175	• 200	• 200	• 225	• 250	• 300	350
Gear Box	2"	2.5"	3"	3"	4"	4"	5"	6"	7"	8"	9"
Main drive motor	0.5 HP	2 HP	3 HP	3 HP	5 HP	5 HP	7.5 HP	7.5 HP	10 HP	12.5 HP	20 HP
Lump Breaker motor	--	--	--	0.5 HP	0.5 HP	1 HP	1 HP	1.5 HP	2 HP	3 HP	5 HP

Design Temp: 200°C, Testing: Vacuum side Full vacuum upto 750 mm of Hg & Steam/Hot water jacket side 5 Kgs/cm² pressure test.

OVER ALL DIMENSIONS (Approximately) :

Length in mm (with Cyclone)	850	1600	1850	2050	2250	2700	3000	3250	3600	3969	4100
Length in mm (with Cyclone, Condenser & Receiver)	1100	2000	2250	2500	2750	3200	3600	4000	4500	4200	4500
Width in mm (with Safety Guards)	550	1200	1300	1450	1600	1800	2100	2350	2600	3000	4000
Height in mm	750	1600	1775	1900	2000	2350	2600	2850	3000	3685	3800
Weight in Kg (Aprox)	400	800	900	1000	1200	1600	2000	2500	3200	3800	5000

CROSS SECTION OF RCVD



SPARKLER FILTER

ACE Industries (I) Pvt. Ltd. manufactures a wide range of Process equipments for the Pharmaceutical and Chemical Industry. ACE Industries (I) Pvt. Ltd. introduces Sparkler Filter in its product lineup of filtration units.



WORKING:

The liquid is directed with the help of pumps through the centre channel of the cartridge from the bottom of the body. Suspended particles get retained on the filter medium resting on the filter plates and the clear filtrate emerges from the side holes of the plates inside the tank and flows out from the bottom outlet. The filter tank does not come into contact with the liquids and hence remains clean. The cake filtrates and solids remain completely inside the fully closed filter plate cartridge.

Complete recovery of the filtrate is possible by passing of air or an inert gas through the bottom inlet to dry the cakes and get a clean empty tank.

SALIENT FEATURES:

- Maintenance can be easily carried out just by lifting the dome i.e., without lifting the cartridge.
- Quick and easy removal of filter plate cartridge. for cleaning of cake.
- Filtrate is obtained without scavenging agents.
- Liquid does not remain between the tank or the cartridge.
- Special pumps available to meet viscos and critical products to be filtered – achieved with help of gear pump / centrifuga pump / lobe pump.
- Uniform distribution of cake and filtrate.
- Back wash facility available to make the solids free for any impurities.
- Fabricated in SS 304 , SS 316L , 904 L , Hastelloy C-276/C-22 Based on compatibility Sparkler filters can also be coated in Halar, Tefzal, PFA, PVDF



TECHNICAL SPECIFICATIONS:

Model	ACE-08		ACE-14			ACE-18				ACE-24			ACE-33			
Plate Diameter	8"		14"			18"				24"			33"			
No. of Plates	6	8	8	10	12	10	12	15	24	15	18	24	15	18	24	33
Filtering Area (m2)	0.217	0.279	0.819	1.001	1.183	1.65	1.95	2.40	3.75	4.192	5.035	6.625	8.948	10.78	14.37	19.68
Cake holding Capacity Ltrs.	4.9	6.3	24.75	30.25	37.75	55	65	80	125	144	171	225	252	290	386	518
Flow Rate/hr	600	800	1500	1700	1900	4000	4600	5500	8200	7000	8500	12500	1500	18000	24000	30000
Pump size and Power	½" 1HP		1" 2HP			1½" 3 HP			1½" 5 HP	2" 5HP			1 1/2" 5 HP	2" 7.5 HP		2" 10 HP

Note : 1. Dimensions and specifications are subject to change without prior notice.
2. Higher Diameter available on request.

NUTSCHE FILTER (VACUUM & PRESSURE OPERATION)

Nutsches are available in lab type through pilot plant and production scale, in volumes ranging from 10 ltrs to 5000 ltrs.

Nutsches are operated through Vacuum and pressure



SS 316 Nutsche Filter

SALIENT FEATURES:

- Manufactured in various materials like SS 304 L / SS 316 L / 904 L / HASTALLOY C – 22 & 276.
- For corrosive filtration we offer nutsche with fluoro chemical coating like tefzal / halar / pfa / pvdf / pp / rubber lining.
- We manufacture Nutsche filters as per ASME standard codes for full vacuum and high pressures filtration. With required safety valves to adhere to the safety standards.
- Available with diameter to suit the user requirement also we have high grade finishes available up to electro polish (finish should be mentioned below)
- Available with jacketing / limpet for heating/cooling or electric heaters.
- Easy clamping of filter media to meet SOP's for easy cleaning
- Provision for pressure indication for jacket and main filter available.
- Sight glasses and sampling ports.
- Wide variety of filter fabric with pore sizes 1 micron to 200 micron pore sizes
- David arm available for easy removal of collected solids or carbon
- Castor wheels available for easy mobility.

COLLOID MILL



A colloid mill is a machine that is used to reduce the particle size of a solid in suspension in a liquid, or to reduce the droplet size in emulsions. Colloid mills work on the rotor-stator principle: a rotor turns at high speeds (2000 - 18000 RPM). The resulting high levels of hydraulic shear applied to the process liquid disrupt structures in the fluid. Colloid mills are frequently used to increase the stability of suspensions and emulsions, but can also be used to reduce the particle size of solids in suspensions.

MODELS AVAILABLE - 1 HP / 3 HP / 5 HP / 7.5 HP.
Available in FLP / NON FLP arrangement.
Jacketed Model for Product Cooling

MULTI MILL



SALIENT FEATURES:

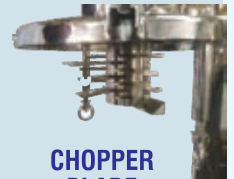
- M.O.C : SS 304 / 316 / 316L.
- Suitable for dry granulation / pulverising / shredding and chopping of materials.
- Easy mobility with the help of castor wheels.
- Beaters: 8 to 12 nos with knife / impact edge and 2 scraper blades.
- Rotor speed : 750 / 1500 / 2100 / 3000 rpm approx.

OPTIONS:

- Flame proof motor with push button switch.
- Direct driven (VFD control)
- Single drive - mechanical seal
- Gmp model.

**MODEL AVAILABLE : 0.5 HP, 1 HP, 3 HP
5 HP. & 7.5 HP.**

SPARES FOR MULTI MILL



**CHOPPER
BLADE**



MESH



**COLLECTION
HOPPER**

VIBRO SIFTER



SALIENT FEATURES:

- M.O.C : SS 304 / 316 / 316L.
- Ideal for gradation and separation of dry powder / granules and semi-solids / liquids.
- Modular design of decks with easily fitted clamps.
- Mesh:S.S.316 moulded lead-free sieves

OPTIONS:

- Flame proof motor with FLP push button switch.
- Magnetic arrangement for tray for heavy particles
- Extra deck available
- Adjustable vibration amplitude
- GMP Models

**MODEL AVAILABLE :12", 20", 24", 30",
36", 48" and 60".**

SPARES FOR VIBRO SIFTER



CLAMP



MESH

HOW GOOD IS ACE? ASK ANY OF THEM....

1. AARTI INDUSTRIES LTDGIDC, VAPI
2. ADITYA BIRLA SCIENCE LTD., TALOJA
3. AJANTA PHARMA LTD., AURANGABAD/KANDIVALI
4. AKRUTI TREXIM PVT LTD., RAIPUR
5. ALGAE TECH PVT LTD., **MALAYSIA**
6. ALTA LABORATRIES LTD., KHOPOLI/MUMBAI
7. AMBERNATH ORGANICS LTD., AMBERNATH
8. AMRUTANJAN HEALTH CARE LTD., KANCHEEPURAM, TAMIL NADU
9. ANABOND TANTALUM PVT LTD., ADYAR, TAMIL NADU
10. ANAMAYEE PHARMACHEM PVT LTD., TARAPUR MAHARASHTRA
11. ANTHEA AROMATICS PVT LTD., TALOJA, TARAPUR, MAHARASHTRA
12. APEX MEDICLAIM PVT. LTD., AURANGABAD / MUMBAI
13. ARCH PHARMALABS LTD., HYDERABAD/GURGAON/MUMBAI
14. ASIATIC DRUGS & PHARMACEUTICALS PVT LTD., DELHI/RAJASTHAN
15. ASTEC LIFE SCIENCE LTD., KHOPOLI
16. ATRA PHARMACEUTICALS, **IRAN**
17. BAL PHARMA LTD., BANGALORE
18. BASIC PHARMA LTD., ANKLESHWAR
19. BAYER VAPI PVT. LTD., VAPI
20. BEXIMCO PHARMACEUTICAL LTD., **DHAKA (BANGLADESH)**
21. BLUE CIRCLE ORGANICS PVT LTD., AMBERNATH/BADLAPUR
22. BORAX LTD., AMBERNATH
23. CADILA HEALTHCARE LTD., ANKLESHWAR/ BARODA
24. CALIBER CHEMICALS LTD., SARIGAM
25. CENTAUR PHARMA, AMBERNATH
26. CIPLA LTD., RAIGAD
27. CLARION DRUGS LTD., NAGPUR
28. CROMO LABORATORIES PVT LTD., MEDKA, HYDERABAD
29. CSTRI, BANGALORE
30. CTX LIFESCIENCES PVT LTD., SURAT/ GUJARAT
31. D.K.PHARMACHEM PVT LTD., BADLAPUR-THANE
32. DABUR INDIA LTD., ALWAR
33. DAK ENERGETICS PVT LTD., **INDONESIA**
34. DAROU PAKHSH PHARMA. CHEM. CO, **IRAN**
35. DARUHERA PHARMACEUTICALS LTD., REWARI, DELHI
36. DAURALA ORGANICS LTD., DAURALA/DELHI
37. DEEPAK NITRATES LTD., PUNE/ROHA
38. DELTA FINOCHEM PVT LTD., NASIK
39. DIFUSION TECHNOLOGIES, **GEORGETOWN**
40. DOLPHINE CHEMICALS, ANKLESHWAR
41. DORFKETAL CHEMICALS(I) PVT LTD., NAVI MUMBAI/SILVASSA
42. DR. REDDYS LABORATORIES LTD., HYDERABAD, VIZAG
43. DYMECH PHARMA PVT LYDGIDC, VAPI
44. EL NASAR CO. FOR PHARMACETICALS CHEMICALS, **CAIRO, EGYPT**
45. ELPEE CHEMICALS PVT LTD., ROHA
46. ENDOC PHARMA, RAJKOT GUJARAT
47. ESCORTS MAHALE LTD., BANGALORE
48. ESSEL MINING & INDUSTRIES LTD., GIDC VAPI
49. EXCEL INDUSTRIES LTD., LOTE PARSHURAM/ROHA
50. FALCON CHEMICALS LLC, **DUBAI (U.A.E)**
51. FLAGMO EA TECHNOLOGIES, DELHI
52. G AMPHRAY LABORATORIES LTD., AMBERNATH MAHARASHTRA
53. GE INDIA TECHNOLOGY LTD., BANGALORE/ **USA**
54. GLUCONATE HEALTH LTD., KOLKATA
55. GRANULES INDIA LTD., VISAKHAPATNAM
56. GULF ENVIROTECH, **AL-FAJOORA**
57. HARSHA ENGINEERS LTD., AHMEDABAD
58. HIGH TECHNOLOGY SYSTEMS S.A, **ARGENTINA**
59. HIKAL LTD., BANGALORE
60. I.H.B.T, PALAMPUR (H.P)
61. INDIAN OIL LTD., FARIDABAD
62. INDOFIL CHEMICALS CO., THANE/DAHEJ
63. INGA PHARMACEUTICALS, MUMBAI/CHENNAI
64. INTAS PHARMACEUTICALS LTD., SANAND/ ANKLESHWAR
65. IOL CHEMICALS & PHARMACEUTICALS LTD., BARNALA PUNJAB
66. ION EXCHANGE LTD., NAVI MUMBAI
67. IPCA LABORATORIES LTD., MAHAD
68. ISAGRO ASIA LTD., PANOLI
69. ITALTECHNO INDIA PVT LTD., **MODENA ITALY**
70. J.K.ANSELL LTD., AURANGABAD
71. JAY BIOTECH PVT LTD., VAPI
72. JOHSON MATTHEY INDIA PVT LTD., RAIGAD
73. JOYTHI LABORATORIES LTD., PONDY
74. JUBILANT CHEMSYS LTD., NOIDA
75. JUPITOR LAYSPVT LTD., KERALA
76. KANCORE INGREDIENTS LTD., KERALA
77. LABORATORIES DAFFODIL PVT LTD., MANGALORE
78. LANT LIPIZ LTD., ERNAKULAM
79. LOBA CHEMI PVT LTD., TARAPUR
80. LUPIN LIMITED., ANKLESHWAR
81. MACLEODS PHARMACEUTICALS LTD., SARIGAM
82. MAHINDRA & MAHINDRA LTD., IGATPURI
83. MANGALAM DRUGS LTD., GIDC VAPI
84. MEDLEY PHRMACEUTICALS LTD., TARAPUR
85. MEGAFINE PHARMA LTD., VAPI, NASIK
86. MEGHMANI LLP, DAHEJ
87. MERCK PHARMA LTD., TALOJA, GOA, AMBERNATH
88. MILLENNIUM CHEMIPHARMA MYSORE PVT LTD., MYSORE
89. NABA ALKHABOR, **BAGADAD (IRAQ)**
90. NEON LABORATORIES LTD., PALGHAR BOISAR
91. NICHOLAS PIRAMAL INDIA LTD., CHENNAI
92. NITIKA CHEMICALS LTD., NAGPUR
93. NITREX CHEMICALS (I) LTD., JHAGADIA BHARUCH GUJARAT
94. NUTRAPLUS PRODUCTS (I) PVT LTD., TARAPUR
95. OMNIACTIVE HEALTH TECH LTD., PUNE KERALA
96. PENAM LABORATORIES LTD., REWARI/DELHI
97. PERFECT CIRCLE INDIA LTD., NASIK
98. PHARMAZELL (INDIA) PVT. LTD., CHENNAI
99. PRAJ INDUSTRIES LTD., PUNE
100. PROTEO LABS, **SOUTH AFRICA**
101. PROVIMI ANIMALS NUTRITION INDIA PVT LTD., BANGALORE
102. R.L.FINE CHEM, BANGALORE/HINDUPUR
103. RALLIS INDIA LTD., AURGANGABAD, ANKLESHWAR
104. ROHA DYE CHEM PVT LTD., ROHA
105. SABERO ORGANICS (GUJARAT) LTD., SARIGAM
106. SANOFI (I) LTD., ANKLESHWAR
107. SAURAV CHEMICALS LTD., DERABASSI
108. SENG THAI COMPANY LTD., **THAILAND**
109. SEQUENT SCIENTIFIC LTD., MYSORE/ MAHAD/ BHARUCH
110. SODIUM METALS PVT LTD., NANDESARI
111. SOFTSULE PVT LTD., MUMBAI
112. SREE RAYALASEEMA HI-STRENGTH HYPO LIMITED., KURNOOL
113. SRIKRISHNA PHARMA PVT LTD., HYDERABAD
114. STERLITE INDUSTRIES LTD., SILVASSA
115. SUD CHEMIE LTD., NANDESARI/ERNAKULAM
116. SUDARSHAN CHEMICALS, PUNE
117. SUPREEM PHRMACEUTICALS MYSORE PVT LTD., MYSORE
118. SUPRIYA LIFESCIENCE LTD., GOREGAON MUMBAI
119. SWAL CORPORATION LTD., HOWRAH
120. SYMBIOTICA SPECIALITY, **MALAYSIA**
121. TATA CHEMICALS LTD., PUNE
122. TATVA CHINTAN PHARMA CHEM PVT LTD., ANKLESHWAR
123. TECHNOCHEM INTERNATIONAL INC., **U.S.A.**
124. TECHNOCRAFT INDUSTRIES (I) LTD., MURBAD
125. TES AMM RECYLIERS INDIA PVT LTD., CHENNAI
126. THAI POLYPHOSPHATE CHEMICALS LTD., **THAILAND**
127. THE DHARAMSI MORARJI CHEMICALS CO. LTD., ROHA RAIGAD
128. THE GODAVARI SUGAR MILLS LTD., SAMIRVADI BHAGALPUR
129. UNICHEM LABORATORIES LTD., JOGESHWARI/ROHA
130. UNIMARK REMEDIES LTD., VAPI/AHEMDABAD
131. UNITED PHOSPHORUS LTD., ANKLESHWAR
132. VADIVARHE SPECIALITY CHEMICALS LTD., IGATPURI/ NASIK
133. VARICON AQUA SOLUTIONS LTD., **LONDON, U.K**
134. VICUNA SPA, **CHILE**
135. ZANDU PHARMACEUTICALS LTD., ANKLESHWAR
136. ZYDUS CADILA HEALTH CARE LTD., ANKLESHWAR

Ace Industries has successfully executed turnkey projects for several of the above listed clients...

They all trust BRAND ACE You should too.



Manufactured and Marketed by:



**ACE INDUSTRIES
(INDIA) PVT. LTD.**

ASSOC. Co's: ACE INDUSTRIES & ACE CHLORIDE

E-mail : sales@acecentrifuges.com
amit@acecentrifuges.com

Website : www.acepharmamachines.com
www.acecentrifuges.com

Adm. Office : 113, Alpine Indl. Estate, Marol Military Rd., Andheri (E), Mumbai - 400 059, India
Tel.: 022 - 42258000

Unit I : **ACE INDUSTRIES (INDIA) PVT. LTD.**
Plot No.504, Village Kondhale, Taluka Wada, Dist.: Palghar,
Maharashtra - 421 312.

Unit II : **ACE CHLORIDES**
7505, G.I.D.C., Karmatur, Chokdi, Ankleshwar, Dist. Bharuch, Gujarat.

Unit III : **ACE INDUSTRIES**
: J-718/2, GIDC, 40 Sheds Area, Vapi, District Bulsar, Gujarat.
: Plot No. 1205/1/A, 3rd Phase Area, GIDC - Vapi, District Bulsar, Gujarat.
Mob.: 9377001430